



Figure 1: Shears from a house in Karanis, Iron, 1st through 5th Centuries CE, Kelsey Museum of Archaeology, 3638. Image from Morgan Lemmer-Webber with permission of the Kelsey Museum of Archaeology

Missing file: /home/cwebber/devel/morgans-dissertation/Images/./static/Schwinden1.jpg



---

Figure 2: Unwashed Fleece from a rubbish pit in Karanis, Wool, 1st through 5th Centuries CE, Kelsey Museum of Archaeology, 13095. Image from The University of Michigan Library \*\* <https://www.lsa.umich.edu/kelsey/galleries/Exhibits/textiles/objects/km13095.html>.



---

Figure 3: Washed Fleece from a house in Karanis, Wool, 1st through 5th Centuries CE, Kelsey Museum of Archaeology, 29768. Image from The University of Michigan Library \*\* <https://www.lsa.umich.edu/kelsey/galleries/Exhibits/textiles/objects/km29768.html>.



---

Figure 4: Spindle and Whorl from a house in Karanis, Wood, 1st through 5th Centuries CE, Kelsey Museum of Archaeology, 3801ab. Image from Morgan Lemmer-Webber with permission of the Kelsey Museum of Archaeology



---

Figure 5: Spindle and Whorl from an unknown context in Egypt, Wood, Bone, Late Antique, Kelsey Museum of Archaeology, 88638. Image from Morgan Lemmer-Webber with permission of the Kelsey Museum of Archaeology



---

Figure 6: Spindle with remains of hook from a house in Karanis, Wood, Iron, 1st through 5th Centuries CE, Kelsey Museum of Archaeology, 3674. Image from Morgan Lemmer-Webber with permission of the Kelsey Museum of Archaeology



---

Figure 7: Spindle Whorl from a house in Karanis, Wood, 1st through 5th Centuries CE, Kelsey Museum of Archaeology, 3791. Image from Morgan Lemmer-Webber with permission of the Kelsey Museum of Archaeology



---

Figure 8: Spindle Whorl from a house in Karanis, Glass, 1st through 5th Centuries CE, Kelsey Museum of Archaeology, 5975. Image from Morgan Lemmer-Webber with permission of the Kelsey Museum of Archaeology





---

Figure 9: Spindle Whorl from a house in Karanis, Bone, 1st through 5th Centuries CE, Kelsey Museum of Archaeology, 21889. Image from Morgan Lemmer-Webber with permission of the Kelsey Museum of Archaeology



---

Figure 10: Spindle Whorl from a house in Karanis, Ivory, Paint, 1st through 5th Centuries CE, Kelsey Museum of Archaeology, 21890. Image from Morgan Lemmer-Webber with permission of the Kelsey Museum of Archaeology



---

Figure 11: Spindle and Whorl from a street in Karanis, Wood, Clay, 1st through 5th Centuries CE, Kelsey Museum of Archaeology, 7641ab. Image from Morgan Lemmer-Webber with permission of the Kelsey Museum of Archaeology



---

Figure 12: Spindle Whorl from a house in Karanis, Wood, Yarn, 1st through 5th Centuries CE, Kelsey Museum of Archaeology, 23970ab. Image from Morgan Lemmer-Webber with permission of the Kelsey Museum of Archaeology



---

Figure 13: Spun Thread from a house in Karanis, Yarn, 1st through 5th Centuries CE, Kelsey Museum of Archaeology, 22605. Image from The University of Michigan Library \*\* <https://www.lsa.umich.edu/kelsey/galleries/Exhibits/textiles/objects/km22605.html>.



Figure 14: Loom Weight from a house in Karanis, Unfired Clay, 1st through 5th Centuries CE, Kelsey Museum of Archaeology, 3338. Image from Morgan Lemmer-Webber with permission of the Kelsey Museum of Archaeology



Figure 15: Loom Weight from an unknown context in Karanis, Unfired Clay, 1st through 5th Centuries CE, Kelsey Museum of Archaeology, 7699. Image from Morgan Lemmer-Webber with permission of the Kelsey Museum of Archaeology



Figure 16: Loom Weight from a house in Karanis, Mud, 1st through 5th Centuries CE, Kelsey Museum of Archaeology, 24011. Image from Morgan Lemmer-Webber with permission of the Kelsey Museum of Archaeology





Figure 17: Loom Weight from a house in Karanis, Limestone, 1st through 5th Centuries CE, Kelsey Museum of Archaeology, 25788. Image from Morgan Lemmer-Webber with permission of the Kelsey Museum of Archaeology

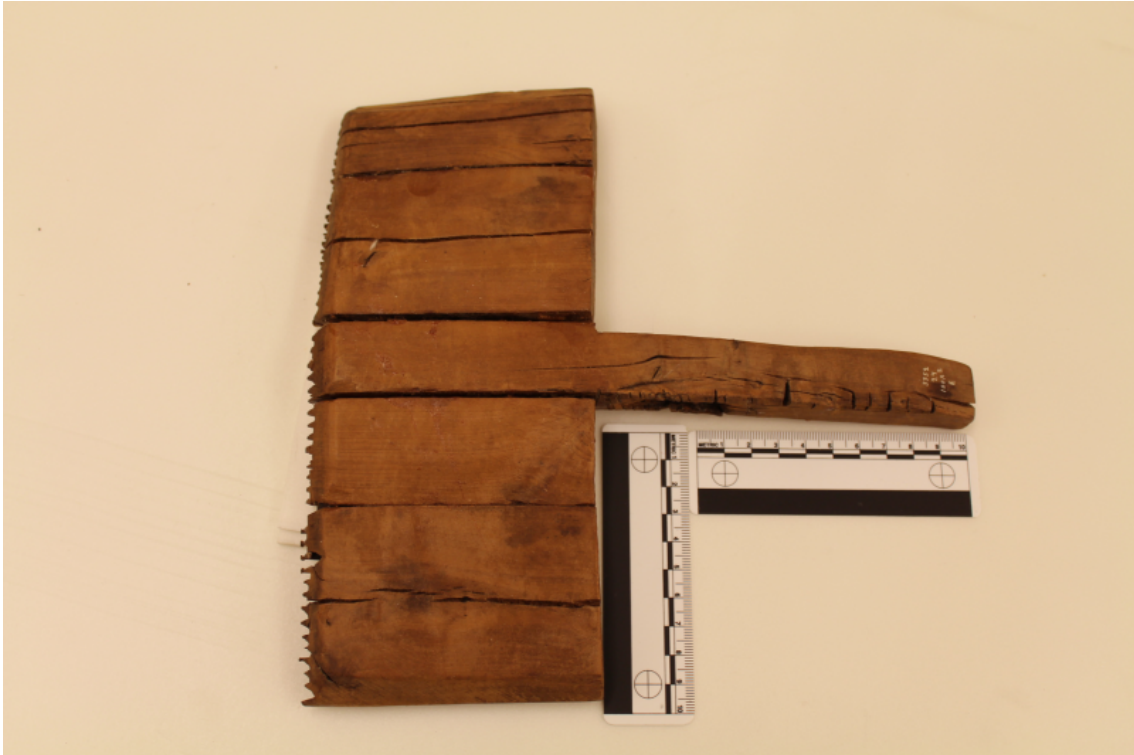


---

Figure 18: Loom Weight from a house in Karanis, Stone, Rope, 1st through 5th Centuries CE, Kelsey Museum of Archaeology, 25789. Image from Morgan Lemmer-Webber with permission of the Kelsey Museum of Archaeology



Figure 19: Shuttle from a house in Karanis, Wood, 1st through 5th Centuries CE, Kelsey Museum of Archaeology, 25789. Image from The University of Michigan Library \*\* [http://quod.lib.umich.edu/k/kelsey/x-0000.00.3905/0000\\_00\\_3905p02.tif](http://quod.lib.umich.edu/k/kelsey/x-0000.00.3905/0000_00_3905p02.tif).



---

Figure 20: Weavers Comb from a house in Karanis, Wood, 1st through 5th Centuries CE, Kelsey Museum of Archaeology, 3352. Image from Morgan Lemmer-Webber with permission of the Kelsey Museum of Archaeology



---

Figure 21: Weavers Comb from a house in Karanis, Wood, 1st through 5th Centuries CE, Kelsey Museum of Archaeology, 3787. Image from Morgan Lemmer-Webber with permission of the Kelsey Museum of Archaeology



---

Figure 22: Weavers Comb from a house in Karanis, Wood, 1st through 5th Centuries CE, Kelsey Museum of Archaeology, 3788. Image from Morgan Lemmer-Webber with permission of the Kelsey Museum of Archaeology



---

Figure 23: Weavers Comb from a house in Karanis, Wood, 1st through 5th Centuries CE, Kelsey Museum of Archaeology, 3789. Image from Morgan Lemmer-Webber with permission of the Kelsey Museum of Archaeology



---

Figure 24: Heddle from a house in Karanis, Wood, Rope, 1st through 5th Centuries CE, Kelsey Museum of Archaeology, 26500. Image from Morgan Lemmer-Webber with permission of the Kelsey Museum of Archaeology





---

Figure 25: Heddle from a house in Karanis, Wood, Rope, 1st through 5th Centuries CE, Kelsey Museum of Archaeology, 26501. Image from Morgan Lemmer-Webber with permission of the Kelsey Museum of Archaeology



---

Figure 26: Heddle Jack from a house in Karanis, Wood, 1st through 5th Centuries CE, Kelsey Museum of Archaeology, 3779. Image from Morgan Lemmer-Webber with permission of the Kelsey Museum of Archaeology



Figure 27: Tunic from a house in Karanis, Linen, Wool, 1st through 5th Centuries CE, Kelsey Museum of Archaeology, 482. Image from The University of Michigan Library \*\* [http://quod.lib.umich.edu/k/kelsey/x-0000.01.0482/0000\\_01\\_0482p01.tif](http://quod.lib.umich.edu/k/kelsey/x-0000.01.0482/0000_01_0482p01.tif).



Figure 28: Textile Fragment from a house in Karanis, Wool, 1st through 5th Centuries CE, Kelsey Museum of Archaeology, 3409. Image from The University of Michigan Library \*\* [http://quod.lib.umich.edu/k/kelsey/x-0000.00.3409/0000\\_00\\_3409p01.tif](http://quod.lib.umich.edu/k/kelsey/x-0000.00.3409/0000_00_3409p01.tif).



---

Figure 29: Textile from a house in Karanis, Flax, 1st through 5th Centuries CE, Kelsey Museum of Archaeology, 10479. Image from Morgan Lemmer-Webber with permission of the Kelsey Museum of Archaeology



---

Figure 30: Textile from a house in Karanis, Textile, 1st through 5th Centuries CE, Kelsey Museum of Archaeology, 11192. Image from Morgan Lemmer-Webber with permission of the Kelsey Museum of Archaeology



---

Figure 31: Rag Doll from a street in Karanis, Textiles, 1st through 5th Centuries CE, Kelsey Museum of Archaeology, 3648. Image from Morgan Lemmer-Webber with permission of the Kelsey Museum of Archaeology



---

Figure 32: Loom Fragment from a house in Karanis, Wood, 1st through 5th Centuries CE, Kelsey Museum of Archaeology, 24863. Image from Morgan Lemmer-Webber with permission of the Kelsey Museum of Archaeology



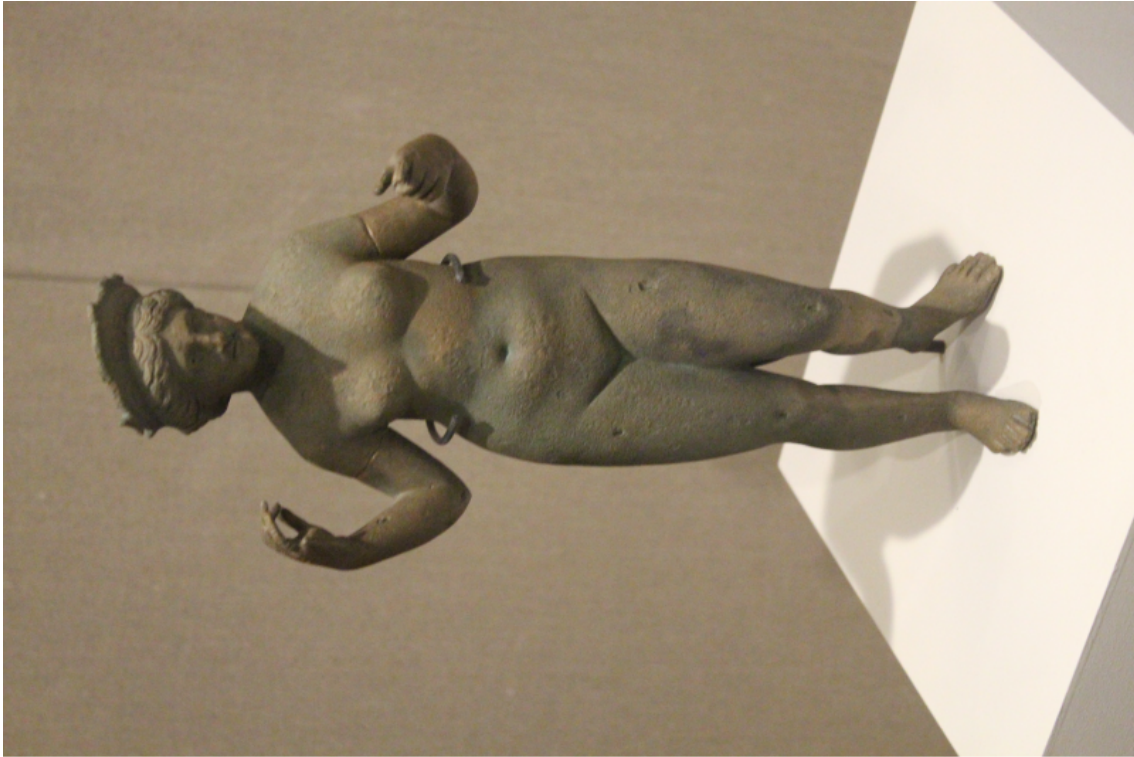


Figure 33: Loom Fragment from an unknown context in Karanis, Wood, Paint, 1st through 5th Centuries CE, Kelsey Museum of Archaeology, 24866. Image from Morgan Lemmer-Webber with permission of the Kelsey Museum of Archaeology



---

Figure 34: Loom Fragment from a house in Karanis, Reed, 1st through 5th Centuries CE, Kelsey Museum of Archaeology, 26544. Image from Morgan Lemmer-Webber with permission of the Kelsey Museum of Archaeology. Don't publish until approved by museum .



---

Figure 35: Sculpture from a house in Karanis, Copper Alloy, 1st through 5th Centuries CE, Kelsey Museum of Archaeology, 10728. Image from Morgan Lemmer-Webber with permission of the Kelsey Museum of Archaeology



---

Figure 36: Attic red-figure white-ground oinochoe of a woman spinning from Locri in Italy, Clay, 500-400 BCE, Beazley, 204379. Image from The Beazley Archive <http://www.beazley.ox.ac.uk/record/F7DE9F69-7F5F-4D7A-ABE3-7F9636539E4E>.



---

Figure 37: Attic red-figure white-ground lekythos of a woman spinning wool from unknown provenance in , Clay, 475-425 BCE, Beazley, 209084. Image from The Beazley Archive <http://www.beazley.ox.ac.uk/record/A165450C-F4C4-4CF0-8662-198798DA0E26>.



---

Figure 38: Attic red-figure white-ground lekythos of a woman spinning wool from unknown provenance in , clay, 425 BCE, Beazley, 208940. Image from The Beazley Archive <http://www.beazley.ox.ac.uk/record/55373C7E-473A-4E0D-84B9-224FE60D5D74>.



---

Figure 39: Attic red-figure lekythos of a woman spinning wool from Athens in , clay, 475-425 BCE, Beazley, 209043. Image from The Beazley Archive <http://www.beazley.ox.ac.uk/record/172555F2-2170-433E-AE9F-1AEB8EA77D7F>.



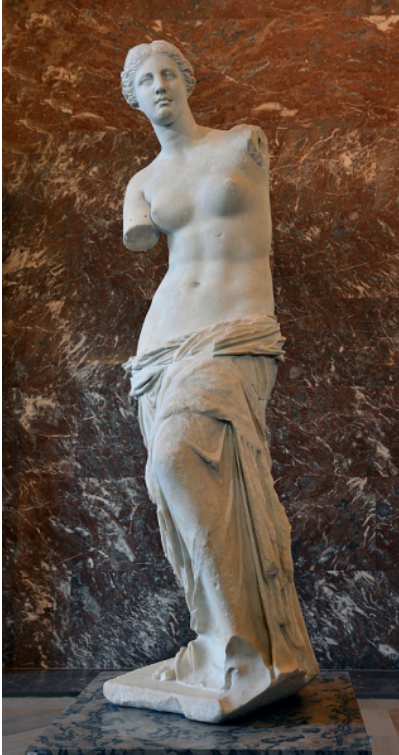
---

Figure 40: Attic red-figure white-ground alabastron fragment of a woman spinning wool from Palatine in , clay, 475-425 BCE, Beazley, 208920. Image from The Beazley Archive <http://www.beazley.ox.ac.uk/record/0BB511BD-1DBD-40BD-9145-DC29E2D71210>.





Figure 41: Attic red-figure stamnos of a domestic scene from unknown provenance in , clay, 500-450BCE, Beazley, 202937. Image from The Beazley Archive <http://www.beazley.ox.ac.uk/record/28436423-A96F-40A9-BA8D-0E3FB1C8ED4A>.



---

Figure 42: Statue of Aphrodite/Venus from Melos in , marble, 100 BCE, Louvre, LL 299. Image from Livioandronico2013 via Wikimedia CommonsCreative Commons Attribution-Share Alike 4.0 International [https://commons.wikimedia.org/wiki/File:Front\\_views\\_of\\_the\\_Venus\\_de\\_Milo.jpg](https://commons.wikimedia.org/wiki/File:Front_views_of_the_Venus_de_Milo.jpg).



---

Figure 43: Drawing reconstructing the arms of the Venus de Milo with a spindle and distaff from Elizabeth Waylan Barber in *Women's Work*, .



Figure 44: Display case of Textile tools from Rheinisches Landesmuseum in Trier, 1st-4th Century CE. Image from Morgan Lemmer-Webber, Creative Commons Attribution-Share Alike 4.0 International .



---

Figure 45: Four loomweights from an unknown context in Trier, Ceramic, 1st-4th Century CE, Rheinisches Landesmuseum. Image from Morgan Lemmer-Webber, Creative Commons Attribution-Share Alike 4.0 International .



Figure 46: Four sewing needles from Trier and Newel in Germany, Bronze, 1st-4th Century CE, Rheinisches Landesmuseum. Image from Morgan Lemmer-Webber, Creative Commons Attribution-Share Alike 4.0 International .



Figure 47: Shears from Lautenbach in Germany, Iron, 2nd-4th Century CE, Rheinisches Landesmuseum. Image from Morgan Lemmer-Webber, Creative Commons Attribution-Share Alike 4.0 International .



---

Figure 48: Flat Comb from Hontheim, Entersburg in Germany, Iron, 353 CE, Rheinisches Landesmuseum. Image from Morgan Lemmer-Webber, Creative Commons Attribution-Share Alike 4.0 International .



---

Figure 49: Three Spindle Whorls from Bundenbach, Altburg in Germany, Ceramic, 4th-1st Century BCE, Rheinisches Landesmuseum. Image from Morgan Lemmer-Webber, Creative Commons Attribution-Share Alike 4.0 International .



---

Figure 50: Spindle Whorl from a funerary context in Trier, Bone, 6th Century CE, Rheinisches Landesmuseum. Image from Morgan Lemmer-Webber, Creative Commons Attribution-Share Alike 4.0 International .





Figure 51: South side of the Igel Monument, full view from Igel in Germany, Sandstone, Early to mid-3rd Century CE. Image from Morgan Lemmer-Webber, Creative Commons Attribution-Share Alike 4.0 International .



Figure 52: Drawing of all four sides of the Igel Monument from E. Zahn in *Trierer Zeitschrift* 31, 1968, Sandstone, Early to mid-3rd Century CE, Igel, Germany.